

A NEW LEARNING ENVIRONMENT

Wood Marsh welcomes the chance to design a worlds-best facility for the Faculty of Architecture, Building and Planning. We are committed to providing strong leadership and working closely with the Faculty and the University to create a unique building that combines creativity, character, innovation, integrity and engagement with the contemporary world. We embrace the themes of the Growing Esteem Strategy, and how these are translated through the 2008 Master Plan to reinforce a distinctive Melbourne experience.

We believe that the new Faculty building can showcase all of the disciplines that it encompasses by embodying the best principles of design, construction, management, theory and sustainability, within a high performing and dynamic building. The Faculty can engage with the broader campus and community by being activated with a range of public and semi-public activities. This can be supported by well considered exposure of the activities within, and an engaged ground plane with an integrated landscape.

Our work possesses great conceptual strength and a clarity of style. We take contextual issues of locality and region as a foundation for ideas that bring innovative, distinctive and sculptural responses. Many of our projects have been recognised as setting new benchmarks and redefining the extent to which Architecture and Architects can contribute to our urban environment and ways of living. We believe it is essential that this building is inspiring and symbolic. Our previous work is evidence of our ability to deliver an iconic building for the Faculty and the University

RELEVANT EXAMPLES

Deakin University, Burwood 1996 – Our focus for this project was to create a new identity for the campus which consisted of disparate building types from the 1950's through to the 1980's. Our response was to create a scheme that maximised its urban potential by designing inventive building skins and a series of open spaces. The five buildings are connected over a sloping site by a system of ramps and colonnades springing from a centrally placed spiral stair. They read as both discrete objects and as part of a group composition. Spaces between the buildings create courtyards of differing quality. The planning is designed to assist Deakin University in achieving its sustainable building policy at the time, which aimed to reduce overall energy costs by designing without air-conditioning, providing windows that are openable and having appropriate sun shading. Hydronic heating was also incorporated and the buildings were designed to be accessible by foot rather than lift access. Internally the planning provides flexibility so that classrooms can be converted into faculty offices.

RMIT Building 220, Bundoora 1998 – This building was designed to house academic facilities and to provide a flagship building for the University, demonstrating its proud presence to the greater community. One simple arc in plan, the bridge-like building sweeps over gently rolling grassed slopes towards 400 year old red gum trees. The long narrow curve of the building is designed to take advantage of the view to the lake and the more spectacular distant views. This also allows good light penetration into the plan. The facades make reference to the existing masonry and concrete structure within the University.

PEDAGOGY AND SPACE

From our experience working with RMIT and Deakin Universities, as well as other corporate and institutional bodies, we understand that pedagogy and architecture are directly related. Architecture prescribes the types of spaces in which teaching, learning and work can occur by allowing or constraining certain modes of interaction. The design for the new Faculty needs to support the particular pedagogies appropriate for the various courses offered and the overlap between them.

Recent directions in pedagogy have been heavily influenced by advancements of technology where information has become highly accessible and instantaneously available. The impact of such developments has led to the teacher becoming more of a mentor or facilitator, rather than an instructor. We can see that consideration must also be given to:

- the importance of learning through experience by encouraging exchange and encounter through different spatial handlings conducive to social interaction
- encouraging student-teacher exchange and interaction at different levels and within different settings of privacy to minimise disruption to others
- versatility and adaptability of settings and infrastructure to accommodate the shifting and reforming knowledge boundaries and changes to the Faculty structure and curriculum
- learning settings equipped with the most appropriate technology and a variety of IT devices
- connection to the external environment
- facilities for effective communication, display and presentation of curriculum outcomes
- breakout spaces for respite
- compatibility of different activities and group sizes



Deakin University, Burwood Melbourne 1997- 5 faculty buildings and urban design



RMIT Building 220, Bundoora 1998 - academic facilities



ACCA - Australian Centre for Contemporary Art, South Bank Melbourne 2002

INSPIRING WORK ENVIRONMENT

As the leading educational institution addressing the inhabited environments in Australia, the new Faculty of Architecture, Building and Planning should embrace the most relevant and advanced methods of learning and working, within the best settings conceivable. This requires an Architectural response that speaks of quality, integrity and global engagement, and is mindful of the historic attributes of the campus and existing Faculty.

It is widely acknowledged that high quality and healthy working environments yield more consistent outcomes. Similarly, it can be said that a creative and sophisticated environment will encourage professional and innovative research, teaching and learning outcomes. This combination will foster links with the international academic community by expanding the University's reputation as a relevant and exciting place to study and work

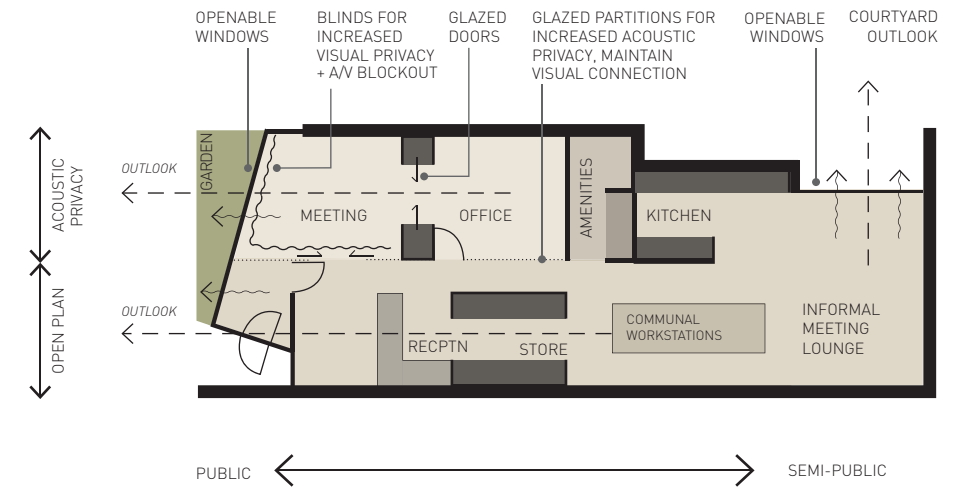
The new work environment should be an optimistic, professional and inviting place to be in. It also has to accommodate the increasing needs and expectations of the academic staff and Research Higher Degree students, especially as technology and knowledge boundaries expand. The building should offer a range of diverse working spaces, to accommodate a range of working styles and backgrounds of its occupants. Users should be able to customise their environment for personal comfort and to gain a sense of ownership.

A range of formal and informal settings, supported by the necessary technology and facilities, should be offered to encourage interaction between staff and also with students to engender an active collegial environment. These can be provided within a variety of privacy and acoustic settings so that solitary pursuits are not compromised.

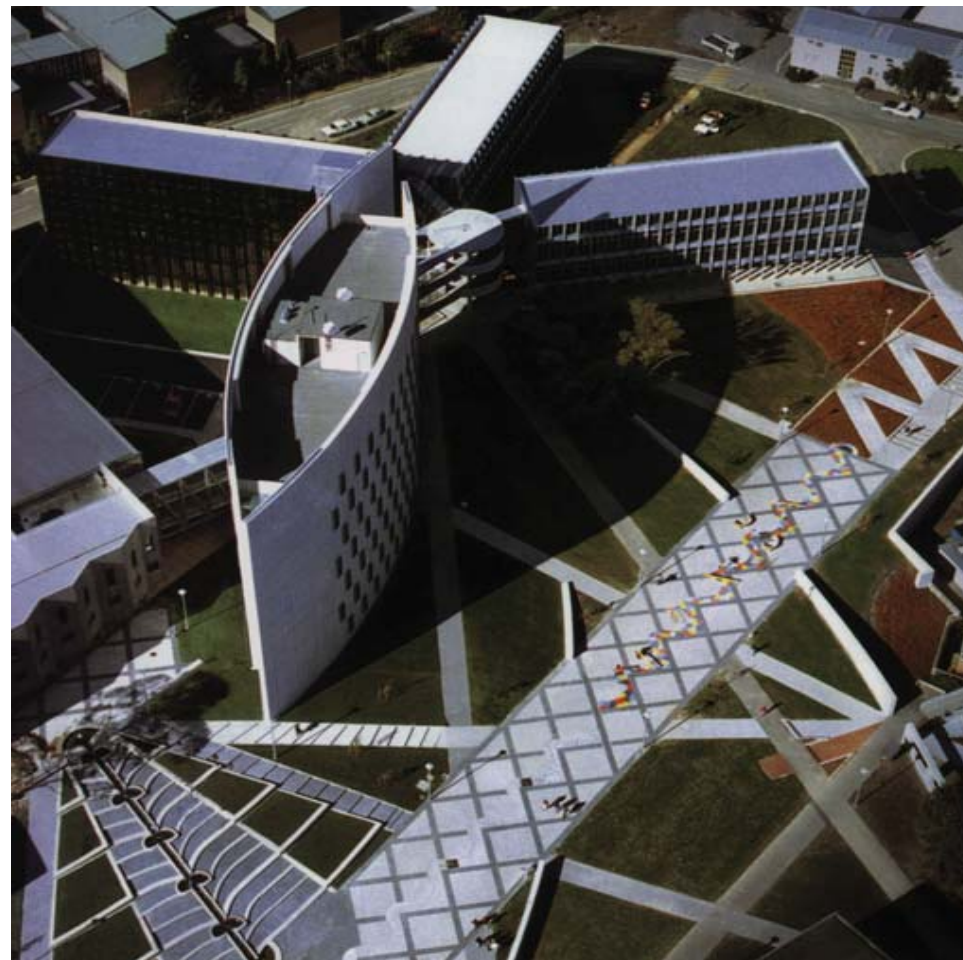
DESIGNING THE EXPERIENCE

At Wood Marsh we always endeavour to create significant, memorable and often unexpected experiences at all levels of scale, inside and outside, and across all project types. We have found that the following approaches serve our clients and architecture well:

- reference to existing physical and historical context to derive palettes of materials that are connected to the place
- considered and controlled use of natural light and fresh air for comfort and health
- provide engaging outlooks and linkages to other spaces whether it be external or internal
- the manipulation of scale and volume to create spatial variety
- careful consideration in the planning and placement of different functional elements to ensure desirable levels of privacy and exposure are achieved
- use of layers of transparency and operable divisions to allow for flexible spatial relationships and operation modes
- holistic approach to the interior fitout and layout that compliments the exterior expression and aspires towards a seamless and completely integrated experience
- natural and muted palette, offset by accents of colour and distinctive materials to create delightful and unexpected juxtapositions.
- detailing that accentuates and reinforces the overall sculptural approach to the form and space
- contrast of raw and refined materials to create delightful and unexpected juxtapositions
- use of tactile, reflective and robust surfaces to give a sense of performance and enliven the reading of space and form



Office, Port Melbourne 2008 - plan diagram showing gradation of privacy settings



Deakin University, Burwood Melbourne 1997- 5 faculty buildings and urban design



Office, Port Melbourne 2008 - office design



Mansion Hotel, Werribee 2001 - hotel and day spa



STUDENT CENTRED LEARNING AND EXCHANGE

Current pedagogical discourse reveals a change in teaching and learning from teacher directed to student centred. Student centred learning is focused toward self-directed learning, problem based learning, and peer-to-peer and collaborative learning. These various modes of interaction require different spaces, facilities and settings. Emphasis has also shifted towards theories of experiential learning and unexpected exchanges, and how these can provide a source of inspiration for new lines of discovery and engender a sense of belonging and security.

Having tutored and lectured at many universities and institutes around the world, we firmly believe that the studio environment is the most suitable for student experimentation, feedback and assessment. It also serves as the most appropriate model to prepare students for the professional working environments that they are likely to enter at the completion of their studies.

In recognition of the pedagogical shift and ambitions for a revitalised vibrant Faculty, the design of the new studio spaces should aim to maximise the chances that students and staff will have of working and interacting with each other. Interaction should be encouraged between different year levels and between different courses. Such interaction is more conducive to the creation of a stimulating environment, one that encourages the sharing of information and, promotion of a culture of co-operation and genuine peer-to-peer interaction. Ultimately, this will lead to students developing deeper levels of thinking and application.

Studio spaces must also appeal to and accommodate the needs of staff and visitors so that Faculty can attract the best available mentors, befitting of an internationally renowned facility.

STUDIO ADAPTABILITY AND EXPERIMENTATION

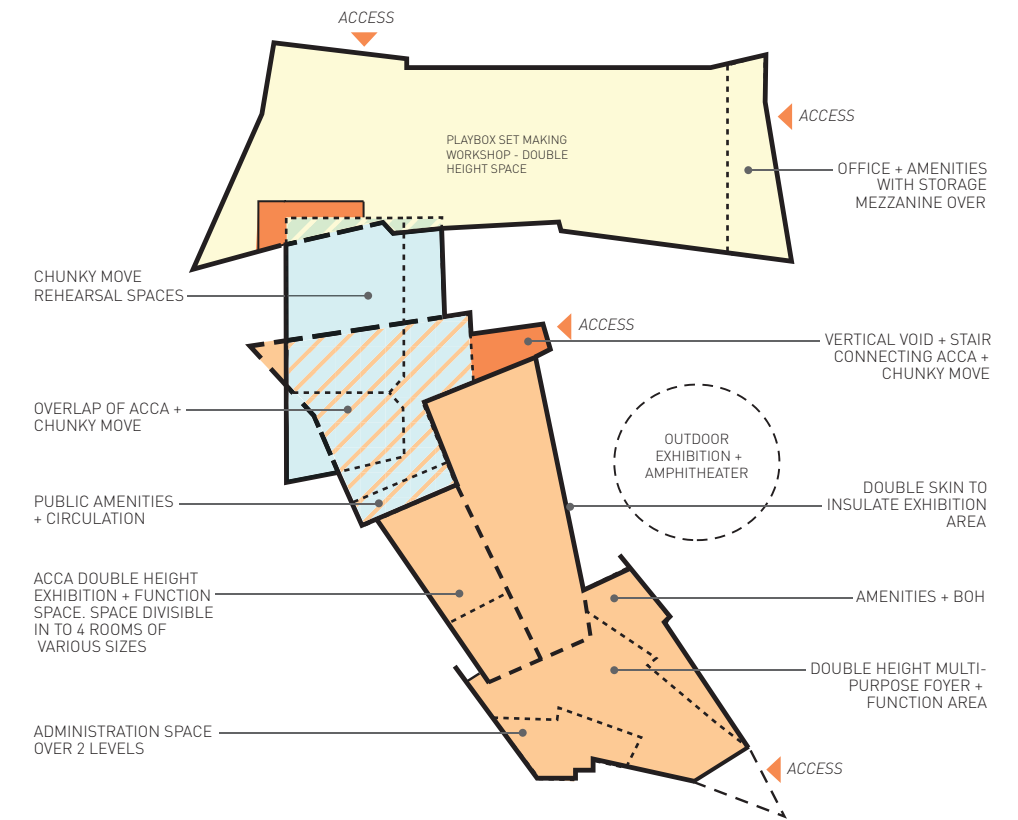
Wood Marsh understands that in order to be effective, the studio spaces need to be supported by a fully integrated learning centre(s) and robust flexible working environments. The studios must be vibrant and welcoming so that students are compelled to take ownership of them and use them to their full potential, and hopefully in unexpected ways.

Our experience working on cultural and institutional facilities such as Deakin University and the Australian Centre for Contemporary Art (ACCA) has shown us that well designed spaces, made with robust materials and a clear vision, can accommodate a multitude of functions and lead to expanded uses, beyond those originally designed for. When designing ACCA we were required to work with 3 separate client groups, ACCA (gallery), Chunky Move (rehearsal spaces) and Playbox (set construction facility), our approach was to combine all of the uses within one large sculptural form to give them a broader public presence. This collective now accommodates permanent professional performance spaces and a variety of private functions with little to no adjustment to the original building design.

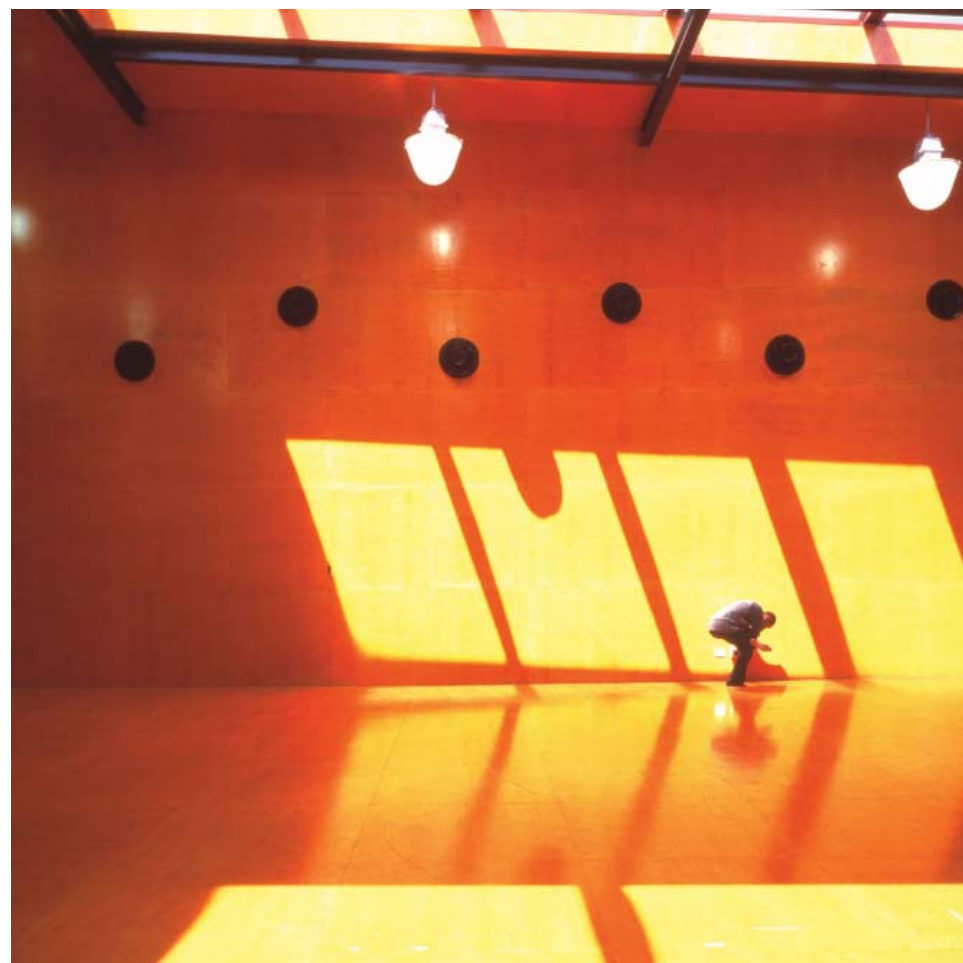
For the new Faculty, we can see that consideration must be given to the following learning settings and spatial qualities in order for the pedagogical approach to be effectively captured in the studio environment:

- versatility and adaptability of settings, infrastructure and furniture to accommodate group learning and collaborative work, without sacrificing the comfort and safety of students
- ability to personalise space
- compatibility of different activities and anticipated group sizes
- use of advanced information and communication technology
- specialised focus laboratories for particular activities eg. workshops, 3D modelling equipment, immersion projection
- outdoor learning environments
- individual spaces for solitary contemplation
- project space and wet areas that are tolerant of mess
- facilities for effective communication, display and presentation of student work
- home bases with secure areas for storage
- teacher meeting areas within different settings of privacy
- provide a range of formal and informal learning spaces
- communal areas for casual encounters (not necessarily centred on study or work)

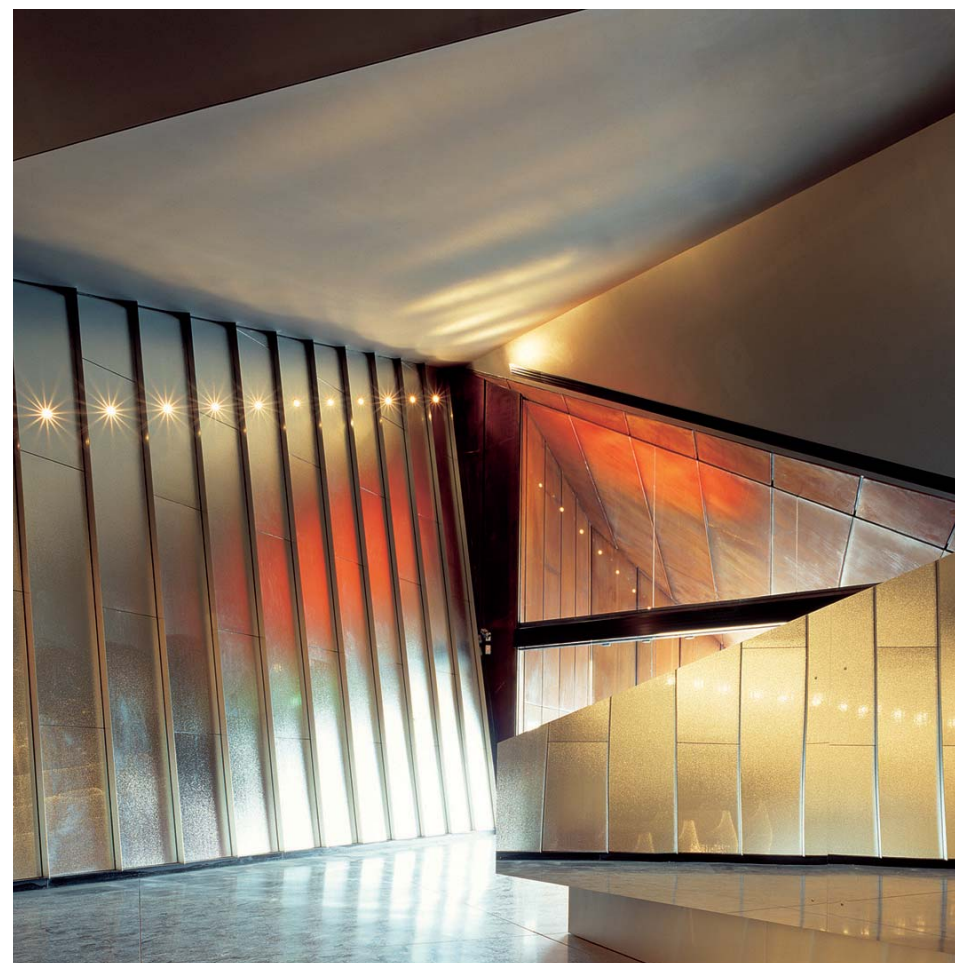
WOOD MARSH ARCHITECTURE



ACCA, 2002- plan diagram showing 3 different clients combined in a single sculptural expression



ACCA - Australian Centre for Contemporary Art, South Bank Melbourne 2002- rehearsal space



ACCA, South Bank Melbourne 2002- foyer and function space



ACCA, South Bank Melbourne 2002- gallery space

ECOLOGICALLY SUSTAINABLE DEVELOPMENT AND HERITAGE

Wood Marsh embraces sustainable development principles and is committed to putting in place world-leading initiatives to inform all aspects of the Faculty building. We will look beyond the brief, anticipate consequences, and find solutions that are fiscally and environmentally inventive and sustainable. We will design a building which provides a positive legacy for the University.

We believe that sustainable design requires a combined interdisciplinary response. We will ensure that commitment to sustainable practices is a priority across all disciplines in our consultant team. We will develop solutions in partnership with an accredited Greenstar consultant from the outset of the design to ensure the targeted rating is achieved. The focus of any initiative should be to reduce waste and energy use, and provide the highest level of comfort and well-being for the building's occupants, for the whole life of the building.

We believe that the design should respond in an exemplary way to the practical, cultural, heritage and environmental qualities of the existing campus architecture and landscape, during the construction as well as the operation of the building. This will be achieved by our fundamental commitment to the existing qualities of the site, as well as a considered response to the targets identified in the 2008 Master Plan.

APPLICATION

We will place an emphasis on the implementation of passive systems and the avoidance of waste – wasted gestures, wasted materials and wasted space. In addition to this, consideration will be given to the following items in light of the Faculty's usage patterns and priorities:

- Accessibility and connectivity of the building and its facilities with the broader campus and community
- Adaptable systems and spaces that allow for the fluctuating needs of the occupants
- Recognition that occupants throughout the building will have different sensitivities to lighting and temperature conditions depending on where they are located and the activities that they are engaged in
- Optimisation of floor plate design to take advantage of orientation and views into and out of the building
- Integration of outdoor landscaped areas to the northern and southern edges of the site
- Maximisation of natural daylight to eliminate or reduce dependence on artificial lighting
- Maximisation of natural ventilation and night purging to minimise use of heating and cooling systems

- Responsible and sustainable use of robust materials for longevity and to accommodate usage patterns
- Passive solar reduction measures and high insulation measures for facades
- Thermal mass opportunities arising out of good orientation of site
- Capturing solar energy for heating of water and lighting
- Minimisation of water use through the collection of rain water for irrigation and toilet flushing
- Consideration of water recycling and waterless sanitary fixtures where possible
- Appropriate building bulk and height that is compatible and respectful to its neighbours
- Integrated information and technology systems to support various methods of communication and teaching as well as to monitor the buildings performance and to alert the occupants
- Adaptable acoustic partitions to allow for comfortable and flexible use of studios and learning settings

RELEVANT PROJECTS

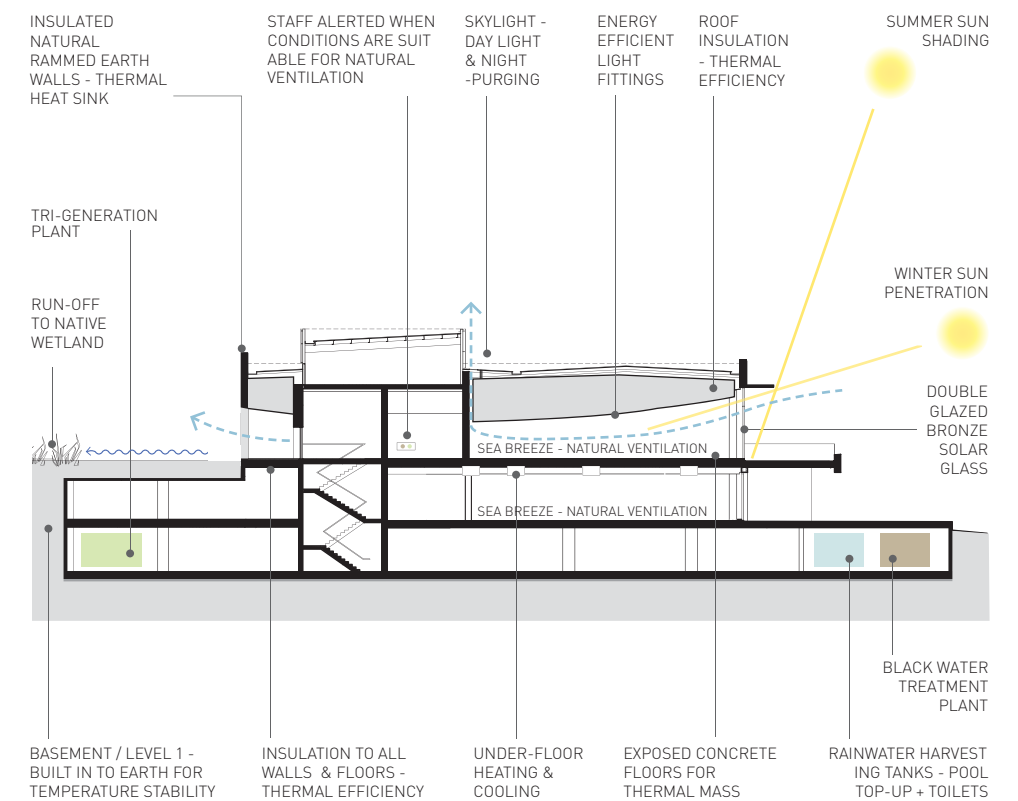
RACV Torquay Golf Club Redevelopment, 2009 – 23,500 sqm (Refer to Criteria 05.1.5 for further details)

Refer to the attached section diagram for an explanation of main initiatives to be implemented.

Greenpoint Apartments, Brighton 2008 – 8,800 sqm

This medium density residential project consists of 17 apartments over 5 buildings. It was initially assessed against the predicted Greenstar Multi-Residential pilot tool. ESD initiatives implemented here include:

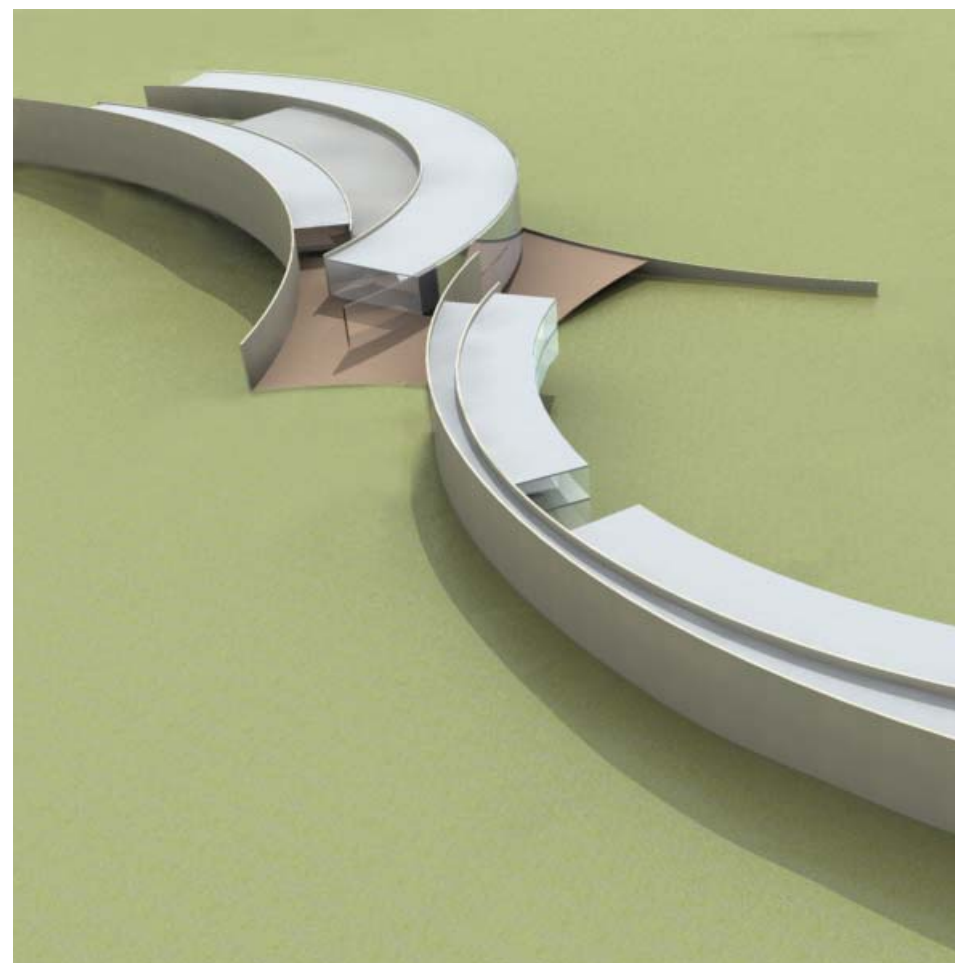
- northern orientation of living spaces to 95% of apartments
- large internal common garden and smaller private courtyard gardens and terraces to all apartments
- water collection for irrigation, toilet flushing and washing machine connection
- double glazing with high performance glass for shading and acoustic attenuation
- first floor over-hangs to shade lower level and shading screens on exposed facades
- reduction of windows on southern facades
- VRV a/c systems with multiple zones to allow different temperature levels and shutting down zones



RACV Torquay Golf Club Redevelopment, 2009 - section showing ESD approach & initiatives



RACV Torquay Golf Club Redevelopment, 2009 - golf club, hotel, function centre & day spa



RACV Torquay Golf Club Redevelopment, 2009 - golf club, hotel, function centre & day spa



Greenpoint Apartments, Brighton 2008 - medium density residential

CAPABILITY STATEMENT

Wood Marsh has 27 years experience in designing civic and cultural projects that have contributed positively to Melbourne's public realm. Our practice has current membership with the Australian Institute of Architects and the Architects Registration Board of Victoria.

Our works is evidence that we possess the necessary capacity, skills, motivation and understanding to deliver successful and innovative design responses that address the social, cultural, environmental and aesthetic considerations of a world leading facility.

Wood Marsh has experience of the aspirational and commercial requirements of University projects having worked with RMIT and Deakin Universities on several projects. We have a successful record of project delivery with many large organisations including VicRoads, SEITA, the Docklands Authority, Major Projects Victoria and Arts Victoria. The key to this success is our commitment to consultation and documentation, ensuring that all levels of interested parties are listened to and kept well informed. We have strong skills in communicating with complex client bodies, as well as maintaining a focus that ensures exceptional design outcomes are delivered.

PROJECT DELIVERY

Our initial focus will be to develop a clear definition of the brief, budget, and programme, with Faculty representative(s), project control groups and the consultant team. We believe that lateral thinking is fundamental in order to create outstanding building that redefines it's type. The entire team will need to be supportive of the core ideas and design concepts to ensure an integrated disciplinary response that can be translated into real outcomes; we will be responsible to guide this process.

We propose regular client design reviews and presentations by the Architect and the consultant team. These should be thoroughly documented to establish a comprehensive Functional and Technical Brief. This brief must also acknowledge the main project and design aspirations. Such understanding will allow us to clearly define a number of useful initiatives that can be tested against the project objectives and criteria. Computer models and renderings, such as those illustrated in this submission, will be used to assist in this process and allow the Faculty to get a real understanding of the proposals generated.

QUALITY MANAGEMENT

Our experience will be utilised to provide the design team and the Principal with the background knowledge to enable important design decisions to be taken quickly and with assurance, and provide the

balance between value, quality and cost. We are committed to providing a quality assured service within a management philosophy and structure conducive to continued improvement. Our office has implemented a system of control and review, based on the requirements of ISO 9001, and outlined in our Office Manual.

RELEVANT PROJECTS

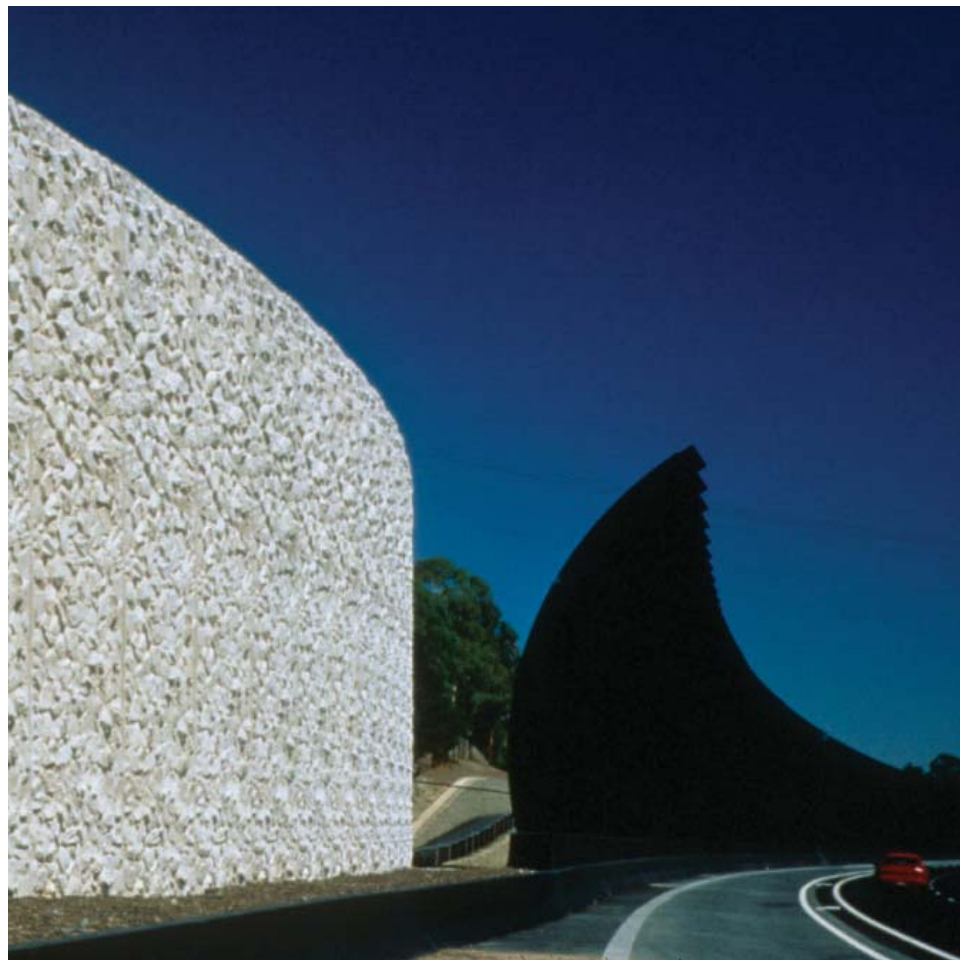
Wood Marsh has vast experience in many building types from residential towers, interiors, university buildings, urban infrastructure projects, to elaborate and small residential buildings. Our body of work is a testament to our ability to think laterally and produce results of the highest quality. The following projects are a sample of our work, demonstrating our attention to detail and design.

- **Deakin University**, Burwood 1997 - \$50m - 5 buildings including the Faculty of Arts & Education; Faculty of Health, Medicine, Nursing and Behavioural Sciences; Faculty of Business & Law
- **Building 220 RMIT**, Bundoora 1998 - \$8m - Faculty of Education, Language & Community Services.
- **RACV Torquay Golf Club Redevelopment**, 2009 - \$75m - golf club facilities, day spa, hotel, conference & function centre, gymnasium, Pro Shop, basement car park.
- **Eastlink Freeway & Operation Centre**, 2008 - \$2.5 billion - sound barriers, vehicle and pedestrian bridges, tech shelters, shared pathways, landscaping approach, 3 buildings (Operations Centre).
- **Yarra's Edge Tower 5**, Docklands 2005- \$100m - 35 levels of apartments over a 5 level podium of mixed use (retail, offices, apartments, car parking).
- **Yve Apartments**, Melbourne 2006 - \$105m - 20 levels of apartments, ground floor with shared facilities and parking, basement car park, Client: Sunland Group.

REFEREES

The referees nominated here can testify to the level of commitment and quality of service that we deliver to all of our clients.

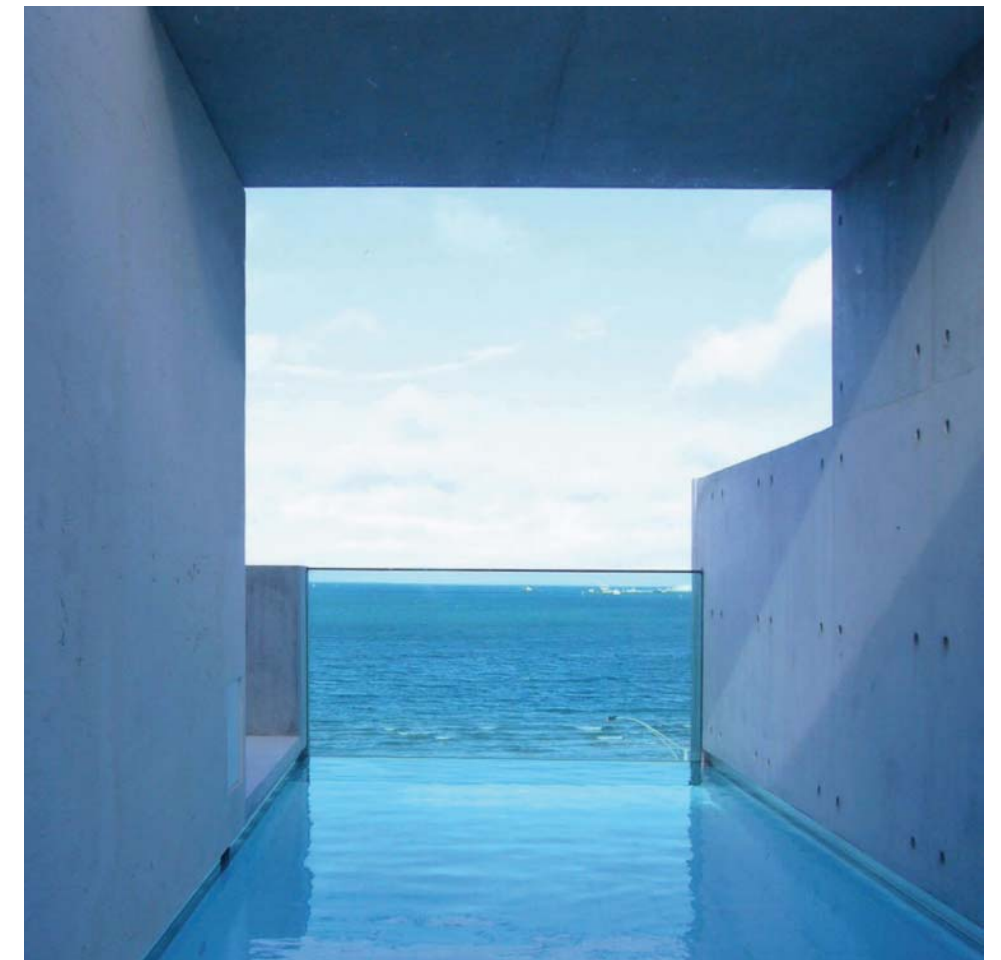
- Laurence G Cox, Joint Chairman of Macquarie Corporate Finance Limited, Chairman of Transurban Group, Chairman of Murdoch Children's Research Institute. Tel: 9635 8091.
- Juliana Engberg - Artistic Director, Australian Centre for Contemporary Art, Tel: 9697 9999.
- Janet Holmes a Court - Chairperson John Holland Group Pty Ltd, Companion of the Order of Australia, Honorary Fellow of the Australian Institute of Building. Tel: (08) 9218-4500.



Eastern Freeway Extension, Melbourne 1998 - urban infrastructure



Beacon, Port Melbourne 2008 - mixed use development



Beacon, Port Melbourne 2008 - mixed use development

RECOGNITION OF EXCELLENCE

Wood Marsh has extensive experience in producing cultural and civic projects that have contributed positively to Melbourne's public realm. Our work has been judged as possessing great conceptual strength and clarity. Contextual issues of locality and region are used as a foundation for ideas that bring innovative, distinctive and sculptural architecture. To date, our work has won 30 Royal Australian Institute of Architects Awards for Excellence (twice the winner of the Victorian Architecture Medal) and has received international recognition.

Our work has been included in numerous publications, lectures and exhibitions, nationally and internationally. Academic contributions have been made by our practice through public lectures, tutoring at several Universities in Australia and abroad, and 10 years on the editorial board of "Transition" magazine.

SELECTION OF AWARDS

- 2009 **Eastlink** - Chairman's Premier Award, Outstanding Urban Design, Outstanding Social Impact - Architectural & Design Excellence in the South East Awards
- 2006 **Yve Apartments** - Victorian Architecture Medal, Harold Desbrowe-Annear Award - RAIA
- 2001 **Werribee Mansion Hotel** - The Lachlan MacQuarie Award (Conservation), The Interior Award John George Knight Award (Heritage), Marion Mahony Award (Interiors) - RAIA
- 2000 **Docklands Infrastructure** - Urban Design Australian Award - Australian Council of Building Design Professions
- 1998 **Eastern Freeway Extension** - Victorian Architecture Medal, The Walter Burley Griffin Award (Urban Design), Joseph Reed Award (Urban Design) - RAIA
- Building 220, RMIT, Bundoora** - William Wardell Award (Institutional) - RAIA
- Eastern Freeway Extension** - National Project Award in Landscape Architecture Design: Transport and Infrastructure - Australian Institute of Landscape Architects
- 1997 **Deakin University, Burwood** - Award of Merit (Institutional) - RAIA

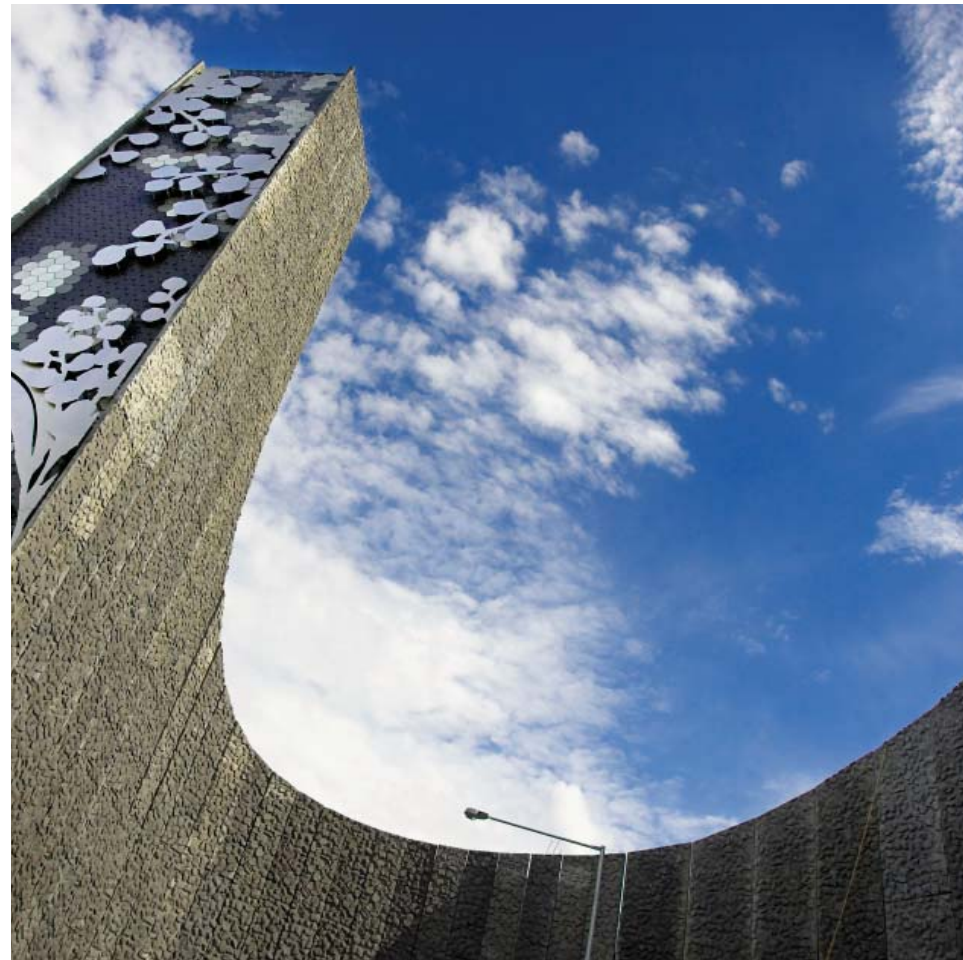
SELECTION OF EXHIBITIONS & DOCUMENTARIES

- 2009 'Museums in the 21st Century: Concepts Projects Buildings' curated by Arts Centre Basel (touring between 2006-2012)
- 2008 'Sunday Arts' Episode 15 2008 - ABC TV - Eastlink Freeway Interview
- 2007 'Living the Modern: Australian Architecture' curated by Deutsches Architektur Zentrum
- 2003 'Architecture Biennale Rotterdam', Netherlands
- 2002 'Venice Architecture Biennale', Italy
- 2000 'In The Mind Of The Architect' - ABC TV - Documentary

SELECTION OF PUBLICATIONS & REVIEWS

- 2008 'A skilled hand and cultivated mind: a guide to the Architecture and Art of RMIT University' - Harriet Edquist and Elizabeth Grierson
- 2007 'Living the Modern: Australian Architecture' - Edited by Claudia Perren and Fristien Ring for DAZ '100 Special Edition' - Architectural Review Australia
- 2006 'Wood/Marsh: Australian Centre for Contemporary Art' - UME 20 - Haig Beck & Jackie Cooper
- 2005 'Mastering Architecture' - Leon Van Schaik
- 2004 'House II' - C3 Topic
- 'Cultural Facilities II' - C3 Topic
- 'The Phaidon Atlas Of Contemporary World Architecture' 'Summer 2002/2003 Edition' - Architecture Review U.K.
- 2003 'Lo Specchio dell' Australia' - Domus - 2003 March Edition 857
- 'Judging Architecture: Issues Divisions Triumphs' - Goad Gollings Pidgeon
- 2002 'Gottlieb House' - GA Houses - Issue 69
- 2001 'New Directions in Australian Architecture' - Phillip Goad
- '10 x 10' - Phaidon Press Limited
- 1998 'Orange Arc' - Architectural Review Australia, Autumn 1998 - Alex Selenitsch
- 1997 'Learning Curve' - Architectural Review Australia, Winter 1997 - Phillip Goad
- 1996 'Wood/Marsh: Townhouses, Cromwell Road, Melbourne' - UME 3 - Haig Beck & Jackie Cooper
- 1995 'Australian Perspectives on Art' - Anne Mancini
- 1992 'Wood/Marsh' - The Interior - Professor Leon Van Schaik
- 1991 'New Spirit in Architecture' - Prof. Peter Cook and Dr Rosie Llewelyn-Jones
- 1989 'Wood/Marsh' - Space Design Japan, February 1989 - Kobun Ito
- 1988 'Antipodean Jewel' - Architectural Record America, April 1988 - Phillip Goad
- 1985 'Ciao Australia Coast to Coast: The Last Wave' - Domus Italia, Jul/Aug 1985
- 'The New Spirit' - Architecture Review, London, October 1985

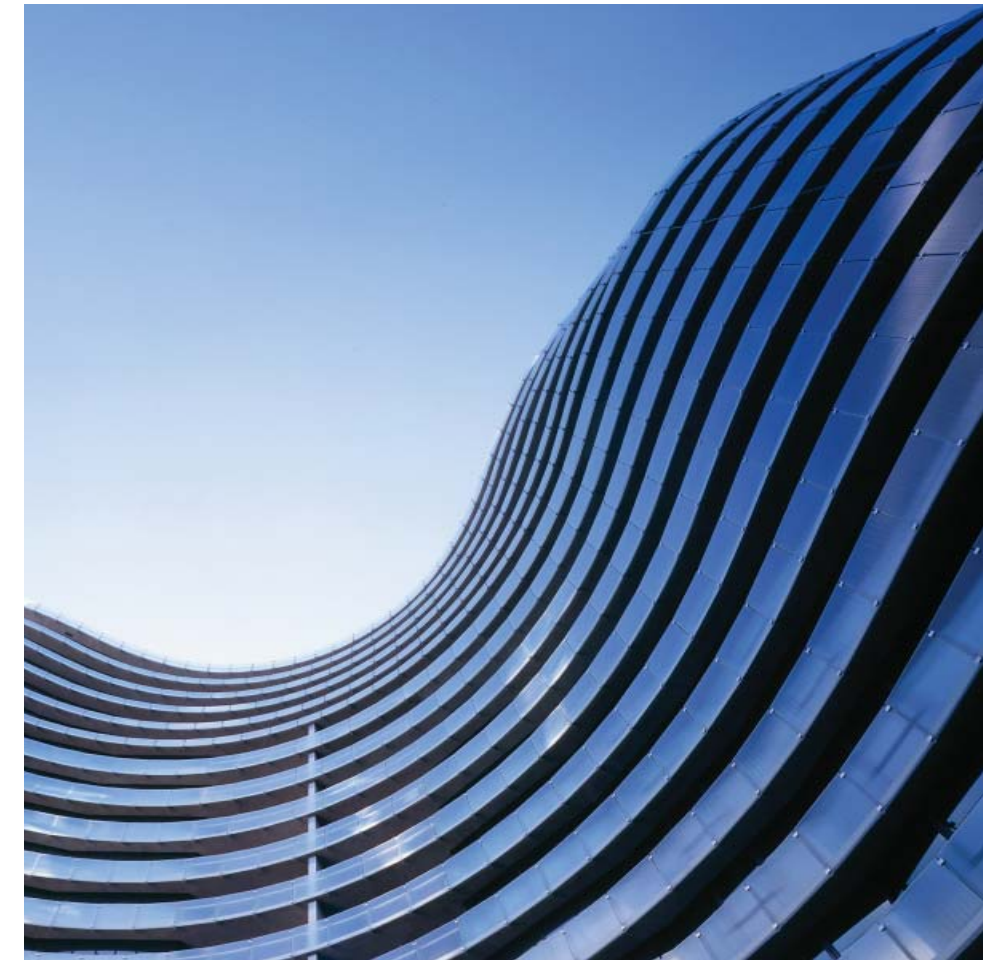
For additional information about our practice please refer to our website at woodmarsh.com.au



Eastlink Freeway, Mitcham to Frankston, Melbourne 2008 - urban infrastructure



Yarra's Edge Tower 5, Docklands Melbourne 2005- residential tower over mixed use podium



Yve Apartments, St Kilda Road Melbourne 2006 - residential tower